



City of White Salmon Office of City Hall

City of White Salmon NOTICE OF STAKEHOLDER MEETING

WHITE SALMON BLUFF CONNECTOR TRAIL Stakeholder Meeting #1: Introduction and Identification of Issues

Notice is hereby given that the City of White Salmon will hold a public stakeholder meeting regarding the White Salmon Bluff Connector Trail on September 12, 2024, from 5:00 to 7:00 PM. The meeting will take place in person at the City Council Chambers in the White Salmon Fire Hall (119 NE Church, White Salmon, WA) and will also be available via teleconference. The virtual meeting link can be accessed on the city's webpage at www.whitesalmonwa.gov.

Agenda Items

1. Call to Order
2. Welcome and Introductions
3. Project Overview
4. Discussion and Comments
5. Next Steps
6. Questions
7. Adjournment

Purpose

The City of White Salmon is collaborating with a project team from Harper Houf Peterson Righellis (HHPR) and Columbia West Engineering to analyze and develop a trail connection from SR 14 to SR 141. This connection will create a steep-grade link to the pedestrian corridor in Downtown White Salmon. The trail segment will connect the City of White Salmon, located on the bluff above the Columbia River, to pedestrian routes along the waterfront, SR 14, and neighboring cities including Bingen, WA and Hood River, OR.

Background

Currently, there are no pedestrian routes or separate pedestrian paths connecting White Salmon to the Columbia River waterfront. This connector project aims to create a safe, dedicated pedestrian path, distinct from high-traffic routes on SR 14 and SR 141. Upon completion of the Hood River-White Salmon Interstate Bridge replacement project, this connector will enhance multi-modal accessibility and integration with the new bridge.

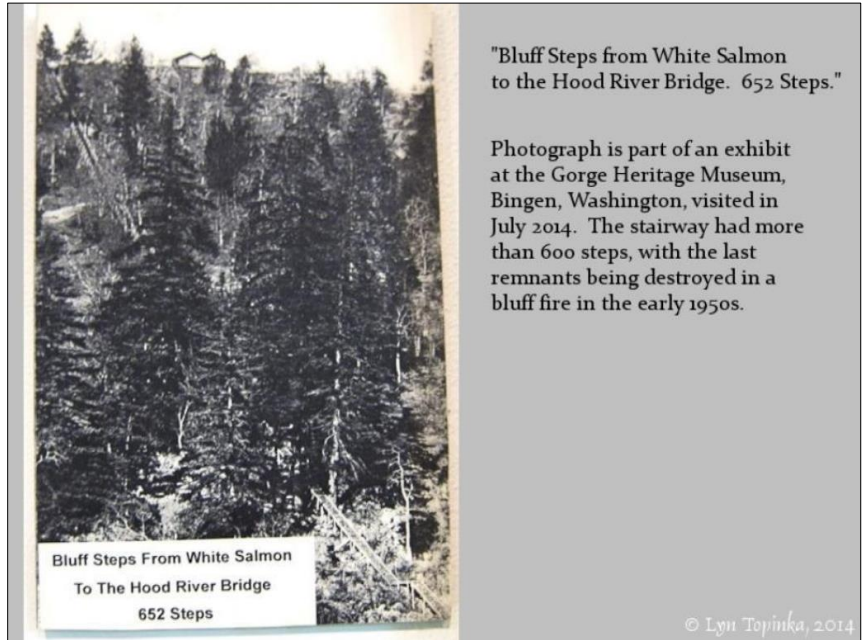
Traffic Concerns

Downtown White Salmon experiences an average daily traffic of over 3,000 cars, with nearly 10,000 cars on SR 14. These traffic levels raise significant concerns for pedestrian safety. This project will prioritize safety in its design, incorporating clearly marked and secure crossings at points where the trail intersects existing roads. It will also connect to the Columbia River, the existing Park and Ride, and the future development of the Hood River-White Salmon Interstate Bridge.

American with Disabilities Act (ADA)

Due to the steep terrain, it is anticipated that an ADA-compliant route may need to bypass the stair sections of this trail. Instead, the focus will be on ensuring that path connections extend eastward from the SR 14 trailhead into the City of Bingen and up to the City of White Salmon, providing a fully ADA-accessible route.

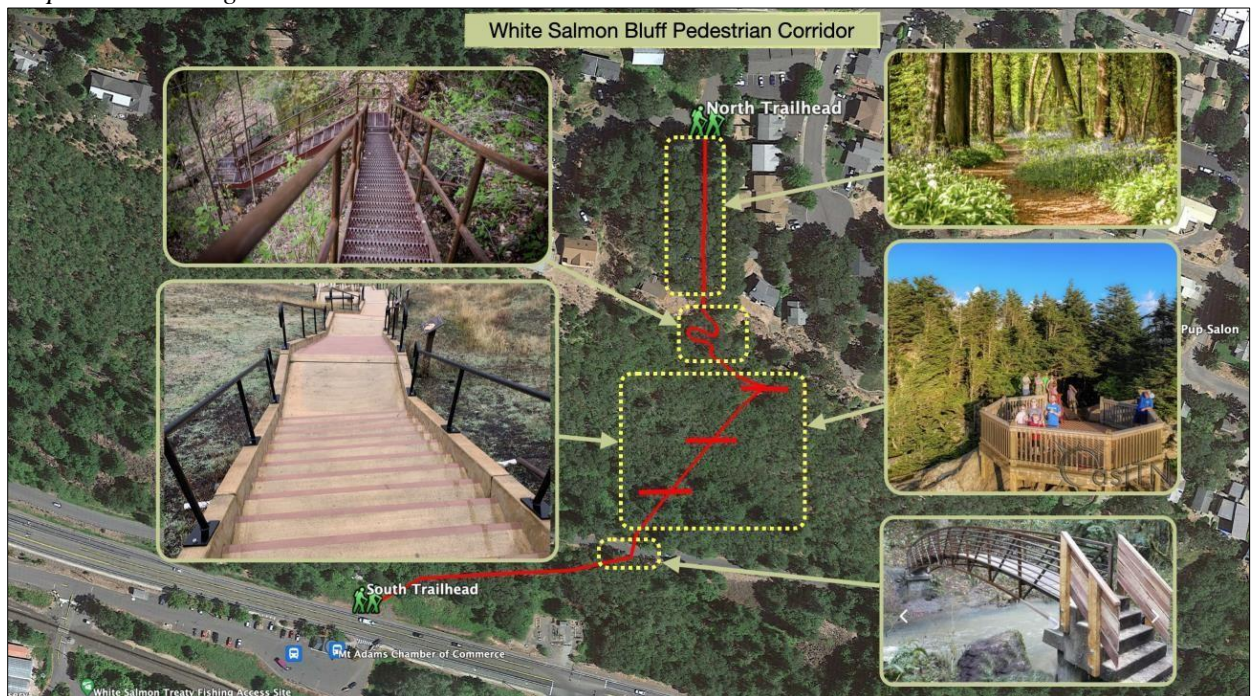
Historic Stair Photos



From the late 1800s to the mid-1900s, a wooden stairway was constructed to link the White Salmon with the Hood River Bridge and boat landing. The boat landing at White Salmon served as a crucial transportation hub, facilitating river travel and trade. It was a primary point of access for both goods and passengers arriving by boat along the Columbia River.

This Bluff Connector Trail proposes to reintroduce a set of stairs in the same general location as the original, restoring a historic landmark and enhancing the identity and pride of White Salmon. The updated design will feature viewing platforms and secure pedestrian crossings at N Dock Grade Road and SR 14.

Proposed Trail Alignment



Project Approach

Existing Conditions

The project site, approximately 0.19 miles in length, is situated on a steep, rocky hillside and is adjacent to private properties at several points. The area is surrounded by wild grasses and other vegetation that is common fire fuel.

Design Process

Site Investigation – The consultant teams will first review available information on the project site to understand existing constraints. Columbia West Engineering will then conduct a geotechnical investigation and produce a detailed report outlining the design parameters. HHPR will assess critical areas, including habitat and existing vegetation. Additionally, HHPR will engage with key stakeholders, both those adjacent to the project site and community, to gather essential insights through public involvement.

Project Design – HHPR will conduct an alignment analysis to assess the bluff segment where the trail will traverse the steep hill, as well as potential locations for ADA and bicycle routes within the pedestrian trail connection. The project design will need to address stormwater management, fire risk mitigation, landscape architecture, and compliance with the National Environmental Policy Act (NEPA). Additionally, HHPR will evaluate potential construction costs.

Public Involvement Strategy

Community outreach for the project will be conducted primarily in a hybrid format, offering both in-person and virtual participation options. To obtain detailed input from stakeholders with specific knowledge or interest in the project, the team will hold several stakeholder meetings. These meetings will include all property owners within 500 feet of the project site. Additionally, the Friends of White Salmon and other recreational hiking groups will be invited.

Discussion Topics

To ensure that diverse community interests and perspectives are incorporated, the project team will seek input and guidance from stakeholder meetings to better understand existing site conditions and identify opportunities and constraints. Stakeholder Meeting #1 will introduce the project to participants and identify key issues that need to be addressed, such as:

- Pedestrian mobility,
- Walkability as an alternative means of transportation,
- Obstacles that impede the creation of a fully integrated trail network
- Wildfire mitigation efforts,
- Design compatibility issues, and
- Conflicts with the interests of adjacent neighbors

The project team seeks specific guidance to identify key stakeholders in both the project area and the White Salmon community. This will help us better understand existing conditions, as well as opportunities and constraints that could impact trail alignment, pedestrian routes, and other project features.

A copy of the stakeholder meeting agenda is available on the city's webpage at www.whitesalmonwa.gov or you may also request a copy by calling Stephanie Porter at 509-493-1133 #205 or emailing at clerktreasurer@whitesalmonwa.gov.