



White Salmon Bluff Connector Trail Study Stakeholder Meeting #1

Introduction and Identification of Issues
September 12, 2024

Agenda

1. Call to Order
2. Welcome and Introductions
3. Project Overview
4. Discussion and Comments
5. Next Steps
6. Questions
7. Adjournment



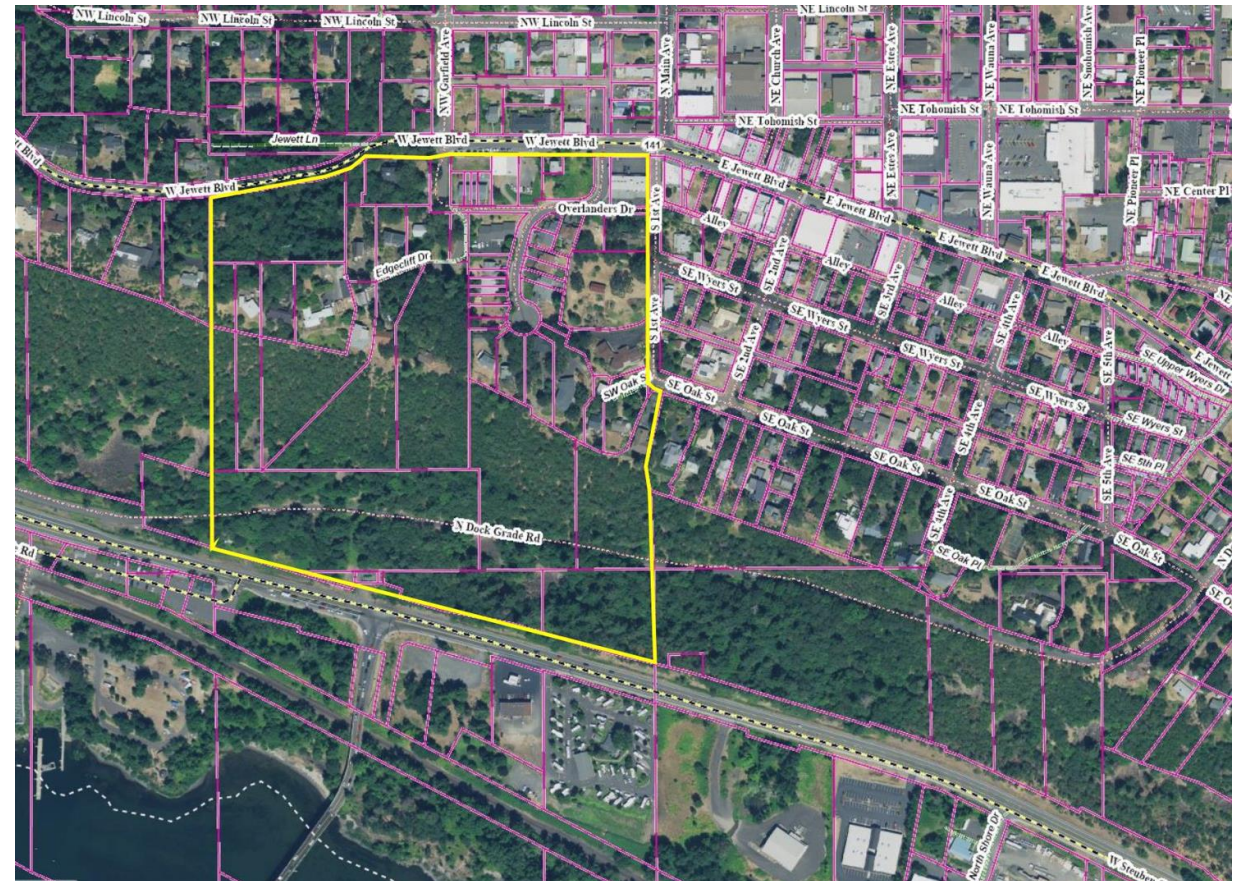
Ground Rules

Contribute to the project design process by:

- Sharing input or providing guidance
- Listening actively
- Being respectful of others
- Allowing others to speak
- Following the agenda

Key Stakeholders

- Stakeholders for the White Salmon Bluff Connector Trail included properties within 500 feet of the proposed trail alignment.
- Key stakeholders were directly notified of this meeting through mail following the City's public noticing procedures.



Stakeholder Expectations

Key stakeholders shall provide their input and guidance related to their knowledge, experience, or observations of the project area. Participation shall be objective and help expand the project understanding and work towards the project goals. Stakeholders may also ask general questions the consultant and staff should be aware of regarding the project.

Communication with Staff and Consultants

Questions regarding the bluff trail can be directed to the consultants throughout the duration of the project but are also encouraged to be saved for meetings.

Consultant Contact – Thuy Cao, Public Involvement Specialist thuyc@hhpr.com (503)221-1131 ext. 154

City Contact – Troy Rayburn, City Administrator administrator@ci.white-salmon.wa.us (509)493-1133 ext. 202

Project Overview

Project Team

City of White Salmon

(Administration)



Harper Houf Peterson Righellis (HHPR)

(Civil Engineering, Structural, Stormwater, Environmental, Landscape, Planning)



Columbia West Engineering

(Geotechnical Engineering)



History

- Late 1800s to mid-1900s, wooden stairway linked White Salmon to the Hood River Bridge and boat landing.
- Boat landing served as a crucial transportation hub, facilitating river travel and trade.
- Bluff Connector Trail proposes a set of stairs in the same general location as the original, restoring a historic landmark and enhancing the identity and pride of White Salmon.
- Feature viewing platforms and secure pedestrian crossings at N. Dock Grade Road and SR 14.



"Bluff Steps from White Salmon to the Hood River Bridge. 652 Steps."

Photograph is part of an exhibit at the Gorge Heritage Museum, Bingen, Washington, visited in July 2014. The stairway had more than 600 steps, with the last remnants being destroyed in a bluff fire in the early 1950s.

© Lynn Topil



Aerial Map



Purpose

- Firefighter and Emergency Services access to the bluff
- Analyze and develop a trail connection from SR 14 to SR 141.
- Create steep-grade link to the pedestrian corridor in Downtown White Salmon.
- Trail segment will connect the City of White Salmon, located on the bluff above the Columbia River, to:
 - Pedestrian routes along the waterfront;
 - SR 14;
 - Bingen, WA; and
 - Hood River, OR.

Stakeholder Meeting #1 will introduce the project to stakeholders in the project area and identify key issues that need to be addressed.

Background

- Need to include firefighter access to the bluff
- There are currently no pedestrian routes or separate pedestrian paths that connect White Salmon to the Columbia River waterfront.
- Connector aims to create a safe, dedicated pedestrian path, distinct from high-traffic routes on both SR 14 and SR 141.
- Enhance multi-modal accessibility and integration with the Hood River-White Salmon Interstate Bridge replacement project.



Transportation Alternatives

- Downtown White Salmon sees over 3,000 cars on average daily, and nearly 10,000 cars on SR 14.
- Traffic levels raise significant concerns for pedestrian safety.
- Trail will prioritize safety with clearly marked and secure crossing where the trail intersects existing roads.
- Connect to the Columbia River, existing Park and Ride, and future bridge.



Parking Possibilities and Trail Connections

- Need to consider wayfinding and directional signage for connections
- Project will not include a parking lot
- This will be a pedestrian oriented trail that does not emphasize vehicles
- How will parking connect to the trail?
- How can parking connections to the trail encourage additional walking or biking opportunities?



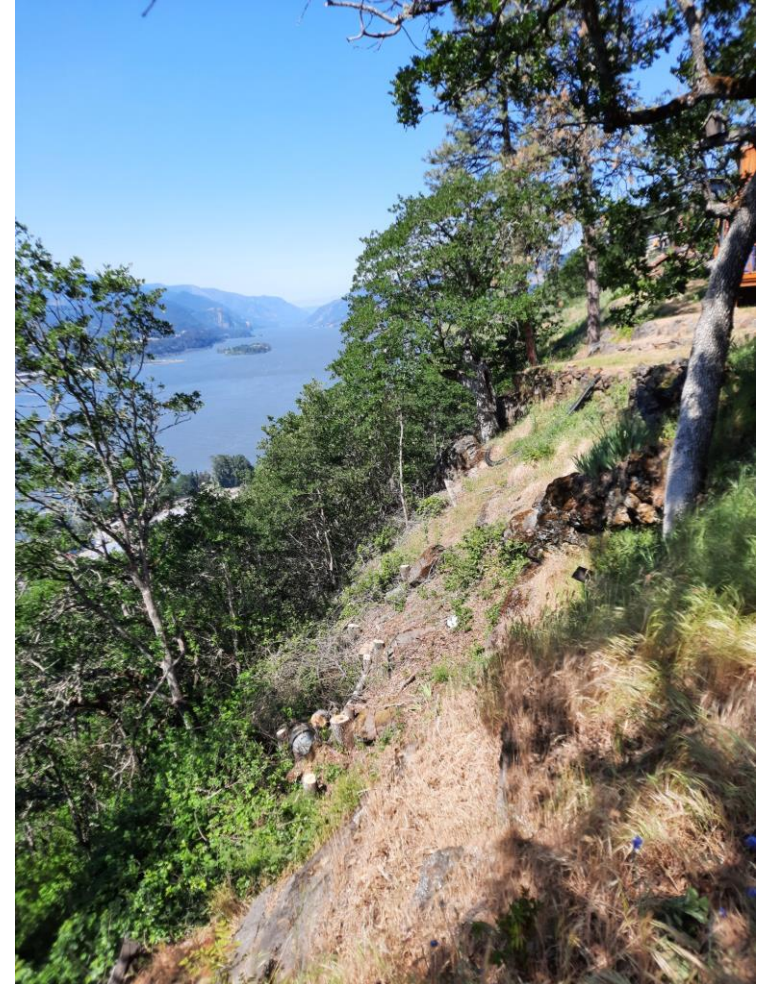
Potential Parking

- Legend
- 1) NW Lincoln St.
Rhinegarten Park
 - 2) Public Parking Lot
 - 3) W Jewett Blvd.
 - 4) Dock Grade Rd.
Free Parking Lot



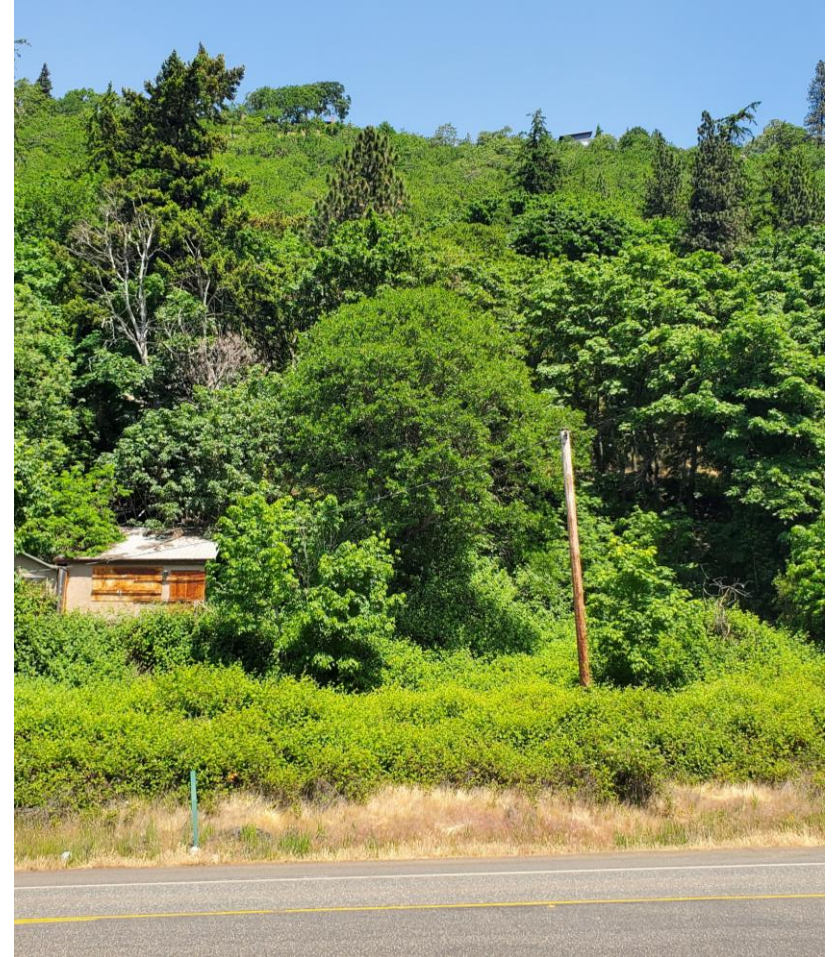
Wildfire Mitigation

- Use non - combustibile materials
- Emergency / Fire Personal Access on Bluff and Dock Grade Road
- Fire Dept. Water Connections Every 200 feet for Fire Fighting
- Proposed buffer / Fire break on either side of Stairs / Pathway



American with Disabilities Act (ADA)

- Due to steep terrain, an ADA-compliant route may need to bypass the stair sections.
- Focus on ensuring that path connections extend eastward from the SR 14 trailhead into the City of Bingen and up to White Salmon.
- Provide a fully ADA-accessible route.



Site Area

White Salmon Bluff Pedestrian Corridor

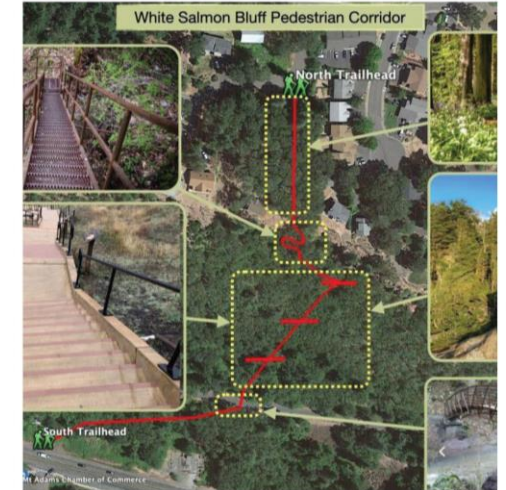
The image is an aerial photograph of a wooded area with a red line indicating a pedestrian corridor. The corridor starts at the 'North Trailhead' (marked with a green hiker icon) and ends at the 'South Trailhead' (marked with a green hiker icon). A yellow dashed box highlights a central section of the trail. Five inset photographs are connected to the map by yellow arrows:

- Top-left: A view looking down a steep, narrow wooden staircase with metal railings.
- Top-right: A view of a dirt path winding through a lush green forest.
- Middle-right: A wooden observation deck with a railing, where several people are sitting. The text 'Pup Salon' is visible on the right side of the inset.
- Bottom-right: A view of a wooden bridge or ramp crossing a stream, with a set of stairs leading up to it.
- Bottom-left: A view looking up a wide, paved or wooden ramp with black metal railings.

Other labels on the map include 'Mt Adams Chamber of Commerce' and 'White Salmon Treaty Fishing Access Site' near the bottom edge.

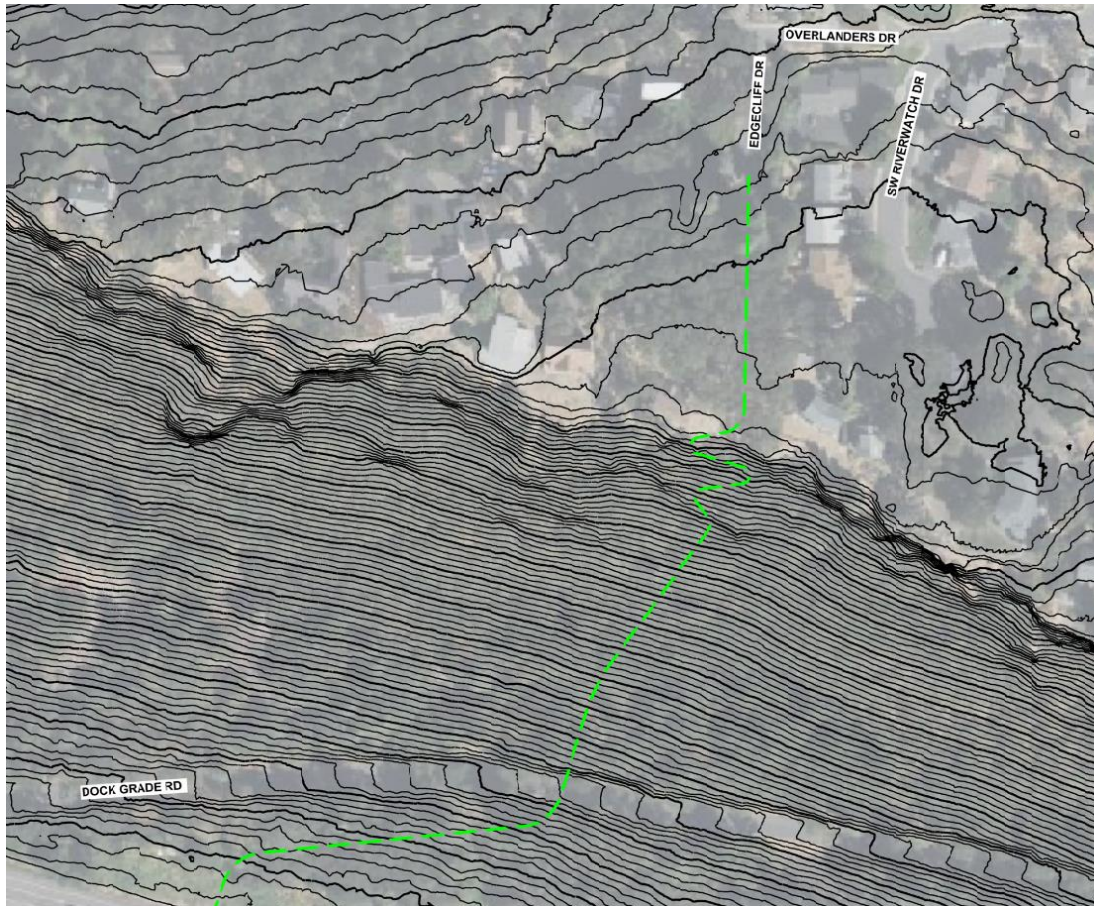
Site Investigation

- **Review of Available Information** to understand existing constraints.
- **Geotechnical Investigation** to outline design parameters.
- **Critical Areas Investigation** including habitat and vegetation.
- **Public Involvement** to engage with key stakeholders and gather community input.



Alignment Analysis

Bluff Segment

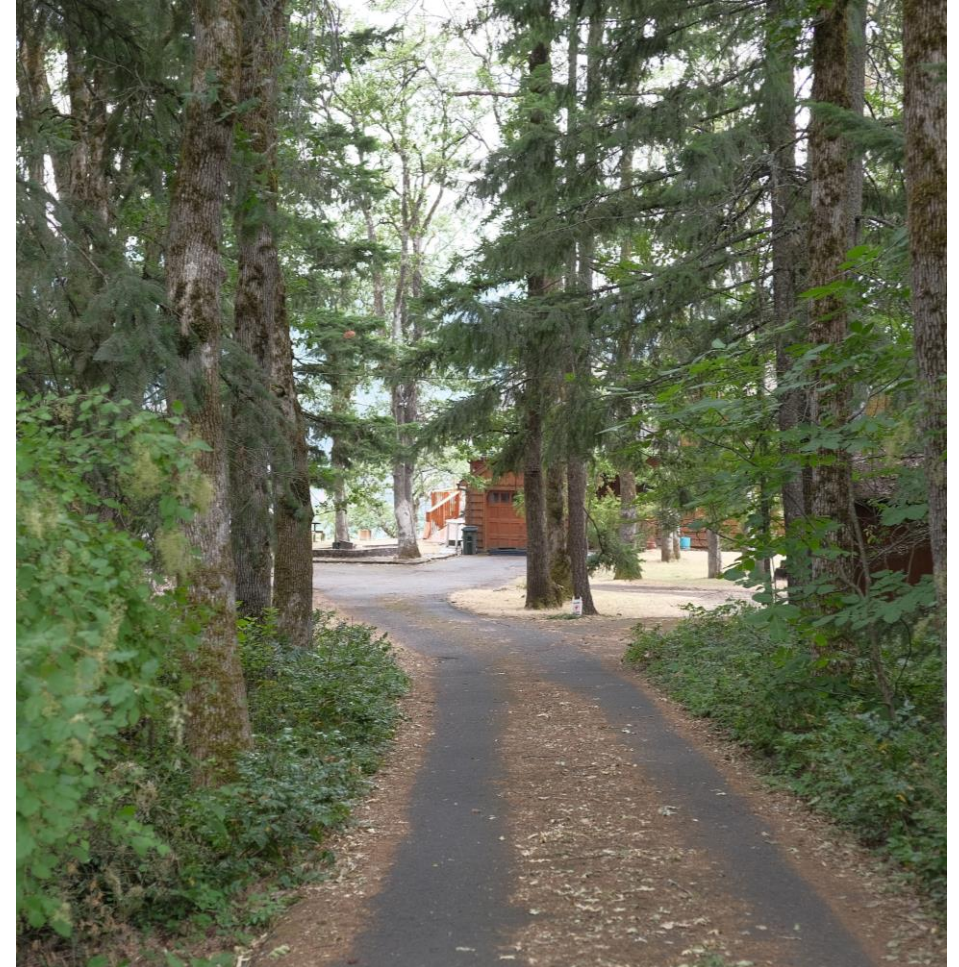


Alternate ADA and Bicycle Route



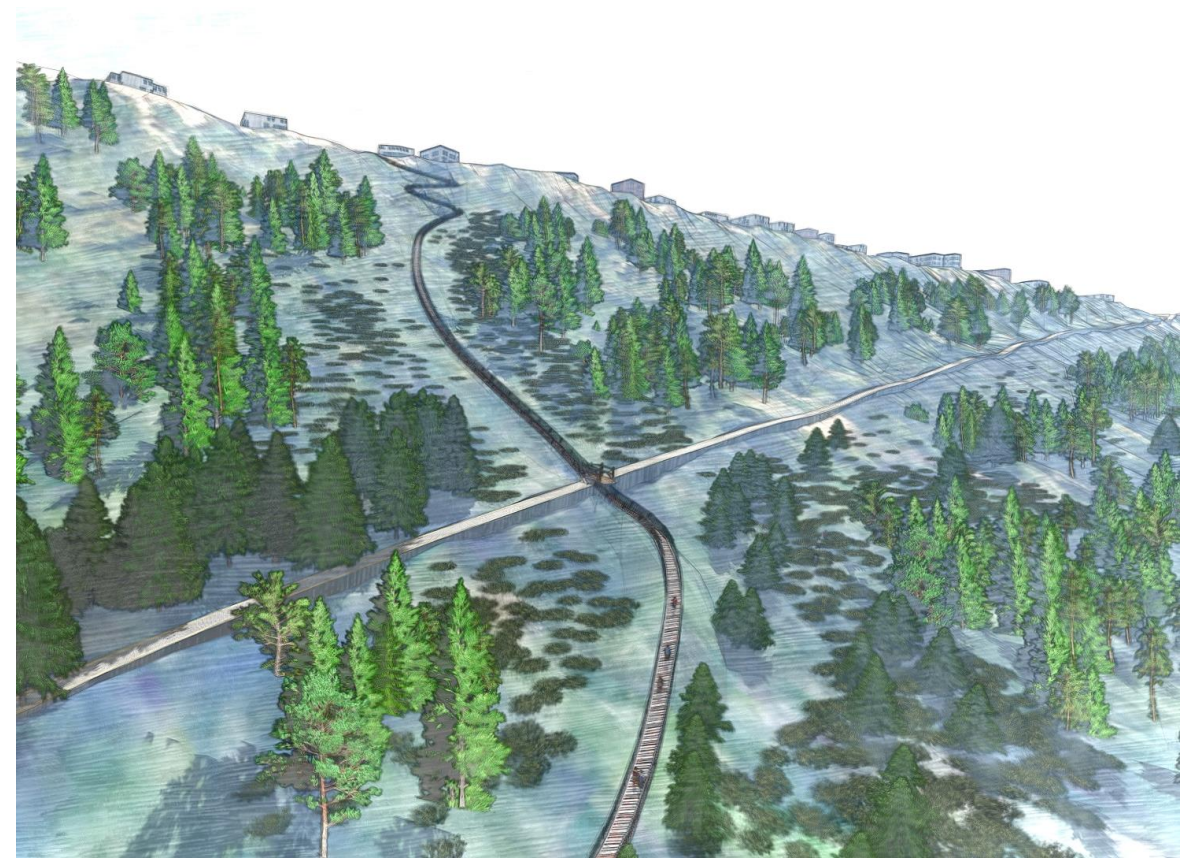
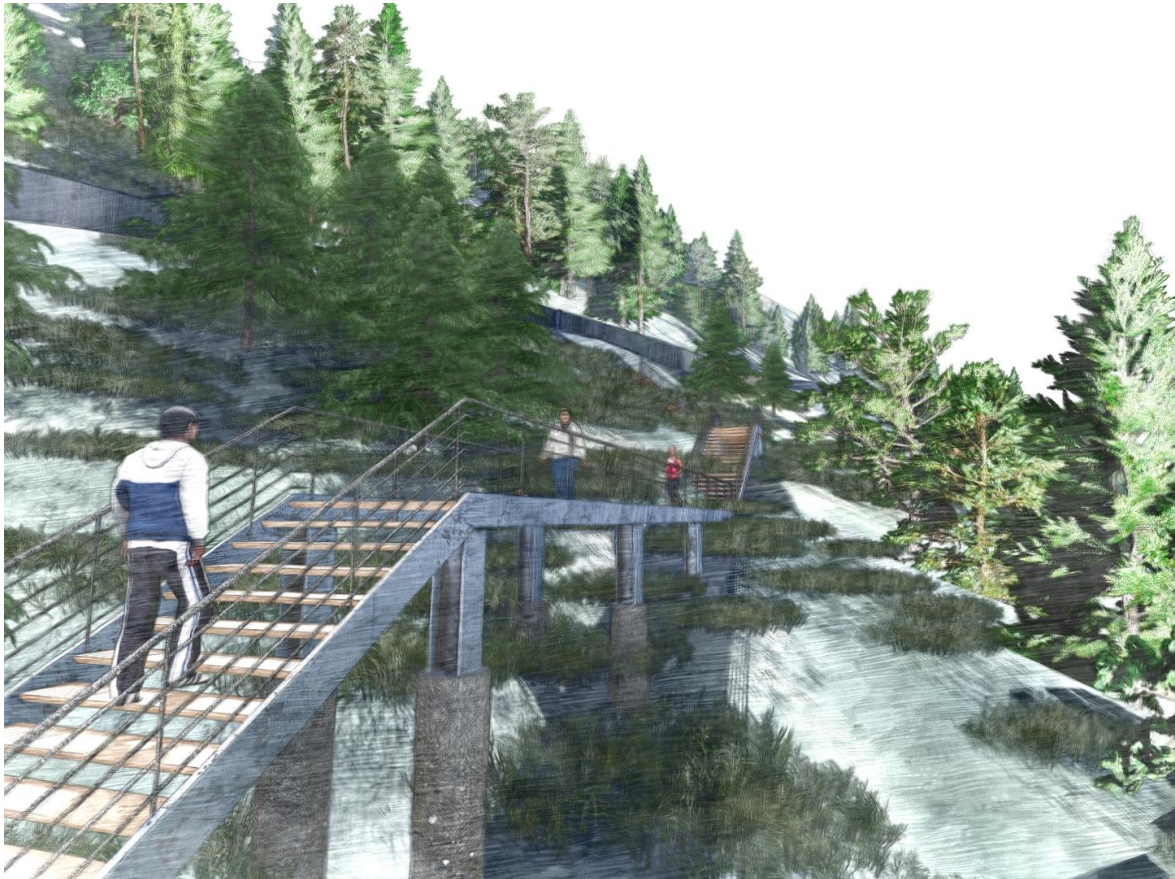
Legal Framework and Best Practices

- Applicable codes:
 - International Building Code (IBC)
 - WSDOT
 - United States Forest Service Standards
 - OSHA
 - Federal ADA Standards
 - White Salmon and Bingen City Codes
- Fire life safety requirements
- Easement constraints on private property donated for the purposes of the trail
- No pocket parks proposed that would create large gatherings



Design Process

Stormwater, fire burn mitigation, landscape architecture, & structural engineering.



Discussion and Comments

Discussion Topics

The project team is seeking input and guidance from project area stakeholders regarding the following key issues:

- Pedestrian mobility,
- Walkability as an alternative means of transportation,
- Obstacles impeding the creation of a fully integrated trail network,
- Wildfire mitigation efforts,
- Design compatibility issues, and
- Conflicts with the interests of adjacent neighbors.

Next Steps

- **Community Open House**
Thursday, October 10th, 2024
In-person and virtual open house to share project information, discuss opportunities and constraints, show preliminary concept plan and alternatives based on site conditions, and provide a public comment form.
- **Stakeholder Meeting #2**
Thursday, November 14th, 2024
Review summary of public comments and discuss potential design options based on community feedback.



Questions?